



Vertical Video Projector

VP Series



High Accuracy



Excellent Quality



Long Using Life



+ Characteristic

- The lifting system adopts linear guide rail and precision screw drive, which makes the lift drive more comfortable and stable;
- With precision toothless rod and fast movement locking device, ensure return error is within 2um;
- High accuracy A optical scale and precision working stage, ensure machine accuracy is within 3+L/200mm;
- HD zoom lens and HD color digital camera, ensure clear image without distortion;
- With programmable surface 4-ring 8-division LED cold light and contour LED parallel illumination, it can control the brightness of the 4-ring 8-division independently;
- With powerful iMeasuring2.1 software system , to enhance the control quality;
- Optional imported contact probes and 3D measuring software, it can help upgrade the machine to be coordinate measuring machine;
- Optional FexQMS measurement data analysis and real-time monitor software, enhance process control, reduce material consumption.

Partial Display



+ Specifications

Product Name	Vertical Video Projector						
Model	VP-2010		VP-2515		VP-3020		
Code#	541-200		541-210		541-220		
Working Stage Travel	200x100mm		200x150mm		300x200mm		
Focusing Travel	150mm						
Measurement Accuracy*	≤3+L/200(um)						
Resolution	0.0005mm						
Loading Weight	10Kg						
CCD	HD700 TVL Color CCD						
Zoom Objective Lens **	HD 6.5X Detented Zoom Lens						
	Optical Magnification:0.7X-4.5X; Video Magnification:26X~172X(21.5" LCD)						
Field of View(mm)	Lens Magnification	0.7X	1X	2.0X	3.0X	4X	4.5X
(Diagonal * Horizontal*Vertical)	1/3"CCD	8.57x6.86x5.14	6.00x4.80x3.60	3.00x2.40x1.80	2.00x1.60x1.20	1.50x1.20x0.90	1.33x1.07x0.80
Illuminating System (Software Control)	Surface: Adjustable 4-ring 8-division 0~255-grade LED Cold Illumination						
	Contour: LED Parallel illumination						
	LED Laser navigation illumination						
Working Environment	Temperature 20℃±2℃,Humidity Range <2℃/hr,Humidity 30~80%,Vibration <0.002g,<15Hz						
Software System	iMeasuring 2.1						
System	Support XP, WIN7, WIN8, WIN10 32/64 Bit						
Power	AC110V/60Hz; 220V/50Hz,600W						
Dimension(L×W×H)	1460 x 1120 x 580mm		1725 x 675 x 620mm		1725 x 675x 760mm		
Weight	280kg		330kg		380kg		

* L is measuring length, unit is mm, the mechanical accuracy of Z-axis and focus accuracy is greatly related to the surface of the workpiece.

** Magnification is approximate value, it is related to the dimension of monitor and resolution.

Customers can choose 0.5X or 2X optional objective, and realize image magnification: 13X~86X or 52X~344X.

Horizontal Video Projector

PH-3015



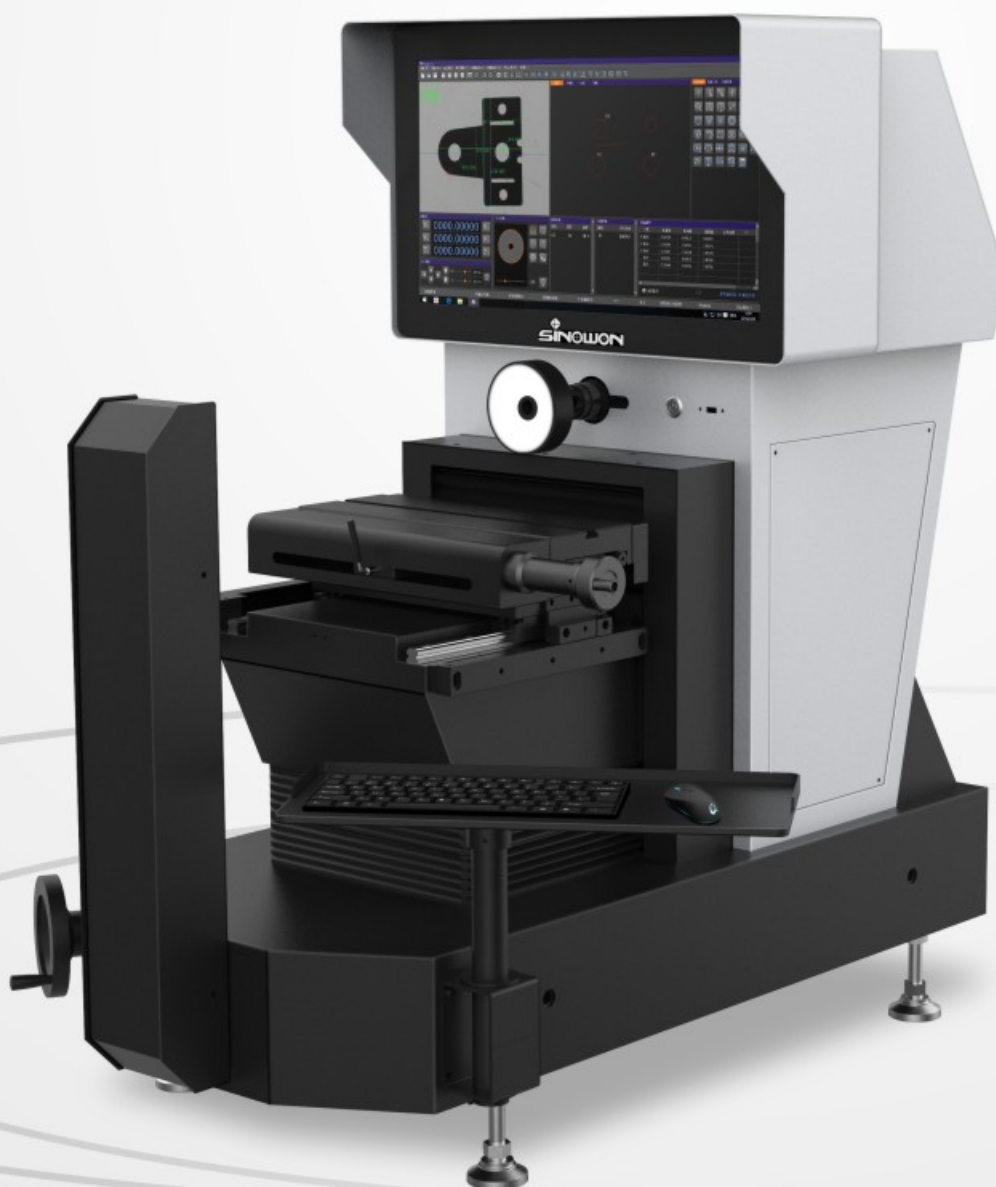
High Accuracy



Excellent Quality



Long Using Life



+ Characteristic

- The lifting system adopts linear guide rail and precision screw drive, which makes the lift drive more comfortable and stable;
- With precision toothless rod and fast movement locking device, ensure return error is within 2um;
- High accuracy A optical scale and precision working stage, ensure machine accuracy is within $3+L/200\text{mm}$;
- HD zoom lens and HD color digital camera, ensure clear image without distortion;
- With programmable surface 4-ring 8-division LED cold light and contour LED parallel illumination, it can control the brightness of the 4-ring 8-division independently;
- With powerful iMeasuring software system, to enhance the control quality;
- Optional FexQMS measurement data analysis and real-time monitor software, enhance process control, reduce material consumption.

■ Partial Display



+ Specifications

Product Name		Horizontal Video Projector					
Model		PH-3015					
Code#		542-310					
Working Stage Travel		355X125mm					
X/Y-axis Travel		200X120mm					
Z axis		110mm					
Measurement Accuracy*		$\leq 3+L/200\mu\text{m}$					
Resolution		0.0005mm					
CCD		HD700 TVL Color CCD					
Zoom Objective Lens **		HD 6.5X Detented Zoom Lens					
		Optical Magnification:0.7X-4.5X; Video Magnification:23X~158X					
Field of View(mm)	Lens Magnification	0.7X	1X	2.0X	3.0X	4X	4.5X
(Diagonal * Horizontal*Vertical)	1/3" CCD	8.57x6.86x5.14	6.00x4.80x3.60	3.00x2.40x1.80	2.00x1.60x1.20	1.50x1.20x0.90	1.33x1.07x0.80
Illuminating System		Surface: Adjustable 4-ring 8-division 0~255-grade LED Cold Illumination					
(Software Control)		Contour: LED Parallel illumination					
Working Environment		Temperature $20^{\circ}\text{C} \pm 2^{\circ}\text{C}$, Humidity Range $< 2^{\circ}\text{C/hr}$, Humidity 30~80%, Vibration $< 0.002\text{g}$, $< 15\text{Hz}$					
Software System		iMeasuring					
System		Support XP, WIN7, WIN8, WIN10 32/64 Bit					
Power		AC110V/60Hz; 220V/50Hz,600W					
Dimension(L×W×H)		1120X720X1100mm					
Weight		165kg					

* L is measuring length, unit is mm, the mechanical accuracy of Z-axis and focus accuracy is greatly related to the surface of the workpiece.

** Magnification is approximate value, it is related to the dimension of monitor and resolution.

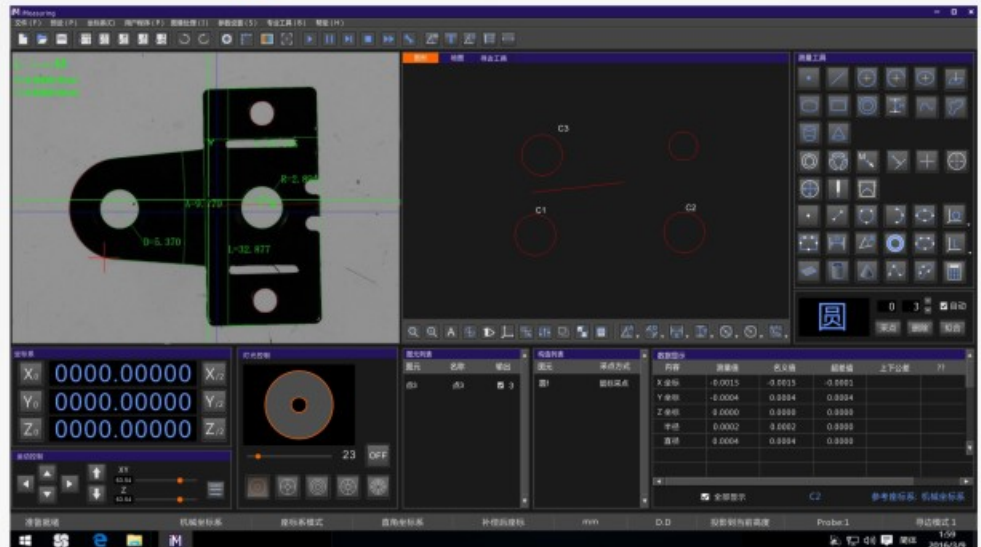
Customers can choose 0.5X or 2X optional objective, and realize image magnification: 13X~86X or 52X~344X.

Vision Measuring Software

iMeasuring

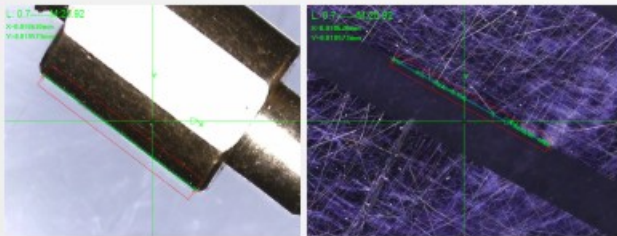
Introduction

iMeasuring software is a professional multisensor measuring software which combined with the developers tenyears experience in the measuring and software research industry. The design principle is friendly operation, powerful function, high accuracy and stability, simple maintenance.



Product Introduction

- Excellent software architecture design and fully objectoriented, to ensure the software is stable and reliable.
- Professional SPC statistical analysis software connected to measuring software, to realize that the data could automatically export to SPC database without manual operation.
- With powerful edge finder algorithm, which can help to get the edge of the shadow or dark image and ensure highly accuracy.



- It is based on different elements and supplies multiple element construction function such as Translation, rotation, extraction, combinations, parallel, vertical, mirroring, symmetry, intersection, tangent, etc.

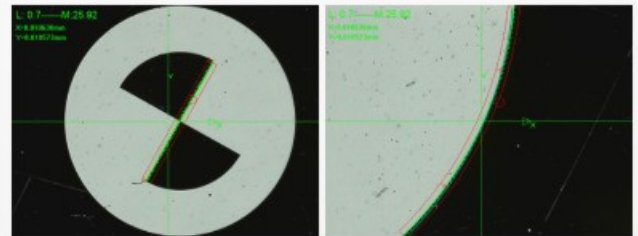


- The measuring data can auto export to TXT, WORD, EXCEL and SPC software database without the third party software conversion and manual operation.

序号	元素	内容	1	2	3	4	5
1	1.1.1	1.1.1.1	0.0000	0.0000	0.0000	0.0000	0.0000
2	1.1.2	1.1.2.1	0.0000	0.0000	0.0000	0.0000	0.0000
3	1.1.3	1.1.3.1	0.0000	0.0000	0.0000	0.0000	0.0000
4	1.1.4	1.1.4.1	0.0000	0.0000	0.0000	0.0000	0.0000
5	1.1.5	1.1.5.1	0.0000	0.0000	0.0000	0.0000	0.0000
6	1.1.6	1.1.6.1	0.0000	0.0000	0.0000	0.0000	0.0000
7	1.1.7	1.1.7.1	0.0000	0.0000	0.0000	0.0000	0.0000
8	1.1.8	1.1.8.1	0.0000	0.0000	0.0000	0.0000	0.0000
9	1.1.9	1.1.9.1	0.0000	0.0000	0.0000	0.0000	0.0000
10	1.1.10	1.1.10.1	0.0000	0.0000	0.0000	0.0000	0.0000
11	1.1.11	1.1.11.1	0.0000	0.0000	0.0000	0.0000	0.0000
12	1.1.12	1.1.12.1	0.0000	0.0000	0.0000	0.0000	0.0000

- The software can import "cancel" and "Recover" to make it easier and faster to operate.

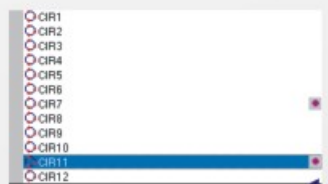
- Support with multiple language, no need to install language pack and change the software which is convenient to local customers.
- The same model of software will be permanent free to update, it can help to reduce other trouble to customer.
- The software could automatically recognize and measure line, circle, arc and other elements.



- The software can show you different intelligent processing functions such as: ultra-limit red alert, ultra-limit pause, failure measuring pause, manual measurement, skip running, forced running, etc.

内容	测量值	名义值	上公差
X坐标	-1.6449	-1.6449	0.0100
Y坐标	0.2627	0.2627	0.0100
半径	1.2695	1.2895	0.0100
直径	2.5391	2.5790	0.0100

- The software has breakpoint setting function, it can be intelligent switched between manual measurement and auto measurement.



- It can easily measure flatness quickly with powerful laser measuring function, and test the small bumps, pits, V-angle and high-precision surface scanning while video and probe cannot test it.

- The software can supply auxiliary light-dimmer indicated function to avoid measuring error caused by light intensity problem and improve measuring accuracy and efficiency.

- The software can supply many function such as accurate focus, quick focus, image height measurement, and the repeatability can reach to 3um(above 2x magnification).

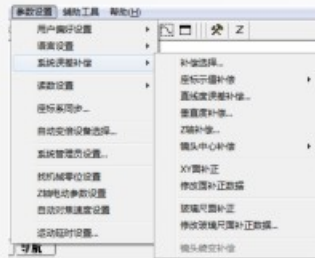


- The software supply multiple running control mode, which make it faster and convenient to position. 1. Operate handle; 2. Click middle key in the image window, long-press right key; 3. Click middle key in the drawing window;

4. Move element list window to the primitive; 5. Click the mouse in the running control window; 6. Click middle key in the scan window; 7. Click middle key in the map window; 8. Input coordinate value.



- The software supply multiple system error correction function, such as: Linear compensation, sector compensation, vertical error compensation, Z axis linear error compensation, to ensure accuracy can reach to 0.002 mm any place in the XY area.

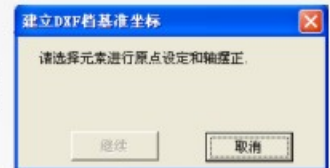


- The software can support to add simple probe based on the video measurement, to realize 3D measurement.

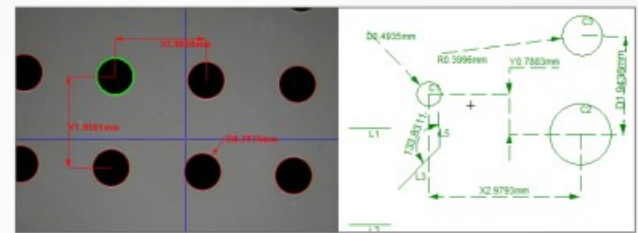


- The software can input viewport navigation, to be convenient to position and get a test place by clicking middle key.

- The software can easily and quickly import and export DXF file and set up coordinate system for auto measurement.



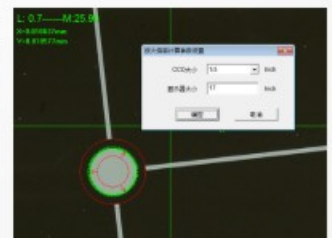
- The image window and drawing window can display the measured elements and marking 2D dimension, which get the result directly.



- The software can photograph mosaic the workpiece to get a large map, then make and measure it.



- The software can auto calculate and mark the present magnification and video magnification, and display the pixel measurement value.



Sinowon Vision Measuring Machine Software Version Number

Version	Video Measurement	Linear Scale Signal	Illumination Control	Manual Probe Measurement	Auto Focus	Auto Stage	Auto Zoom	Auto Probe	Probe Auto Conversion	Laser Measurement	Suitable Models
IM1.0	√	X	X	X	X	X	X	X	X	X	VM100
IM1.5	X	√	X	X	X	X	X	X	X	X	VP300, VP400, PH400, PH600
IM2.0	√	√	X	X	X	X	X	X	X	X	VMM
IM2.1	√	√	√	X	X	X	X	X	X	X	IVISION/VP/PH
IM2.2	√	√	√	X	√	X	X	X	X	X	IFOUCS
IM3.1	√	√	√	√	X	X	X	X	X	X	ITOUCH
IM4.1	√	√	√	X	√	√	√	X	X	X	MVS/AutoVision
IM4.2	√	√	√	√	√	√	√	√	X	X	MVA/MVH/AutoTouch
IM5.0	√	X	√	X	X	X	X	X	X	√	AutoScan
IM6.0	√	X	√	X	X	X	X	X	X	X	IVS-30/60/80/160/240



High Accuracy



Excellent Quality



Long Using Life

Ø300mm Digital Vertical Profile Projector

VP300 Series



Ø300
Vertical Optical System



Standard
10X Objective



Standard
DP400 Digital Readout

+ Characteristic

- The lifting system adopts cross roller rail and precision screw drive, which makes lifting drive more comfortable and stable;
- With coating process reflector, clearer image and great dustproof;
- Adjustable contour and surface illumination, to meet with difference workpiece demand;
- Imported high light and long using life LED illumination, to ensure precision measurement demand;
- High resolution optical system with clear image and magnification error is less than 0.08%;
- Powerful Bi-axial fan cooling system, highly increase using life;
- Powerful and colorful DRO DP400, realized fast and accurate 2D Measurement;
- Built-in Mini-printer, can print and save data;
- With standard 10X objective, optional 20X,50X objective, rotary table, foot switch ,clamp, etc.

■ Partial Display



+ Specifications

Product Name	Digital Vertical Profile Projector	
Reverse Image	VP300-1510 (#511-330)	VP300-2010 (#511-340)
Obverse Image	VP300-1510Z (#511-330Z)	VP300-2010Z (#511-340Z)
Metal Stage Size	258x308mm	258x358mm
Glass Stage Size	148x206mm	148x256mm
Stage Travel	150x100mm	200x100mm
Product Dimension	988x563x1224mm	988x563x1224mm
Packing Dimension	1200x800x1580mm	1200x800x1580mm
Gross/Net Weight	210/165kg	220/170kg
Focusing	90mm	
Accuracy	$\leq 3 + L/200(\mu m)$	
Resolution	0.0005mm	
Screen	Dia: $\phi 312mm$, Measurement Range $\geq \phi 300$ Rotation Angle $0 \sim 360^\circ$; Resolution: 1 or 0.01° , Accuracy $6'$	
Load Capacity	10Kg	
Digital Readout	DP400 (510-340) Multifunction colorful LCD digital readout	
Working Environment	Temp $20^\circ C \pm 5^\circ C$, Humidity 40% – 70%RH	
Illumination	Contour Illumination : 3.2V/10W LED	
	Surface Illumination : 3.2V/10W LED	
Cold-air Blowing System	3-axis Powerful Fan	
Power Supply	AC110V/60Hz; 220V/50Hz, 150W	

+ Objective Lens

Specifications			
Magnification	10X (Std.)	20X (Opt.)	50X (option)
Field of View	$\phi 40mm$	$\phi 20mm$	$\phi 8mm$
Working Distance	80mm	67.7mm	51.4mm



High Accuracy



Excellent Quality



Long Using Life

Ø400mm Digital Vertical Profile Projector

VP400 Series



Ø400
Vertical Optical System



Standard
10X Objective



Standard
DP400 Digital Readout

+ Characteristic

- The lifting system adopts cross roller rail and precision screw drive, which makes lifting drive more comfortable and stable;
- Coating process reflector, clearer image and great dustproof;
- Adjustable contour and surface illumination, to meet with difference workpiece demand;
- Imported high light and long using life LED illumination, to ensure precision measurement demand;
- High resolution optical system with clear image and magnification error is less than 0.08%;
- Powerful Bi-axial fan cooling system, highly increase using life;
- Powerful and colorful DRO DP400, realized fast and accurate 2D Measurement; Built-in Mini-printer, can print and save data;
- With standard 10X objective, optional 5X, 20X, 50X objective, rotary table, foot switch, clamp, etc.



+ Specifications

Product Name	Digital Vertical Profile Projector		
Reverse Image	VP400-2010 (#511-410)	VP400-2515 (#511-420)	VP400-3020 (#511-430)
Obverse Image	VP400-2010Z (#511-410Z)	VP400-2515Z (#511-420Z)	VP400-3020Z (#511-430Z)
Metal Stage Size	308x408mm	308x408mm	458x358mm
Glass Stage Size	198x306mm	198x306mm	356x248mm
Stage Travel	200x100mm	250x150mm	300x200mm
Product Dimension	1003x617x1309mm	1003x617x1309mm	1003x617x1309mm
Packing Dimension	1200x800x1580mm	1200x800x1580mm	1200x800x1580mm
Gross/Net Weight	280/230kg	280/230kg	280/230kg
Focusing	100mm		
Accuracy	$\leq 3 + L/200(\mu m)$		
Resolution	0.0005mm		
Screen	Dia: $\phi 412mm$, Measurement Range $\geq \phi 400$		
	Rotation Angle 0~360°; Resolution: 1 or 0.01°, Accuracy 6'		
Load Capacity	10Kg		
Digital Readout	DP400 (510-340) Multifunction colorful LCD digital readout		
Working Environment	Temp 20°C \pm 5°C, Humidity 40% – 70%RH		
Illumination	Contour Illumination : 3.2V/10W LED		
	Surface Illumination : 3.2V/10W LED		
Power Supply	AC110V/60Hz; 220V/50Hz, 150W		

+ Objective Lens

Specifications				
Magnification	5X	10X	20X	50X
Field of View	$\phi 80mm$	$\phi 40mm$	$\phi 20mm$	$\phi 8mm$
Working Distance	65mm	80mm	67.7mm	51.4mm



High Accuracy



Excellent Quality



Long Using Life

Ø400mm Digital Vertical Profile Projector

VP420 Series



Ø400
Vertical Optical System



Standard
10X Objective



Standard
DP400 Digital Readout

+ Characteristic

- Ø400mm vertical optical path system ;
- Projector body lifting focus system;
- Stage load capacity can reach 30Kg;
- Telecentric Cold LED light source;
- High powerful and colorful DRO DP400;
- Optional 5X, 20X, 50X objective is available.

+ Specifications

Product Name	Digital Vertical Profile Projector
Reverse Image	VP420-3020 (#511-450)
Obverse Image	VP420-3020Z (#511-450Z)
Metal Stage Size	458x358mm
Glass Stage Size	356x248mm
Stage Travel	300x200mm
Product Dimension	1003x617x1309mm
Packing Dimension	1200x800x1580mm
Gross/Net Weight	280/230kg
Focusing	100mm
Accuracy	≤3+L/200(um)
Resolution	0.0005mm
Screen	Dia:φ412mm, Measurement Range ≥ Ø400 Rotation Angle 0~360°; Resolution: 1 or 0.01°, Accuracy 6'
Load Capacity	10Kg
Digital Readout	DP400 (510-340) Multifunction colorful LCD digital readout
Working Environment	Temp 20°C±5°C, Humidity 40% – 70%RH
Illumination	Contour Illumination : 3.2V/10W LED Surface Illumination : 3.2V/10W LED
Power Supply	AC110V/60Hz; 220V/50Hz, 150W

+ Objective Lens

Specifications				
Magnification	VP420-5X	VP420-10X	VP420-20X	VP420-50X
Field of View	φ80mm	φ40mm	φ20mm	φ8mm
Working Distance	65mm	80mm	67.7mm	51.4mm



High Accuracy



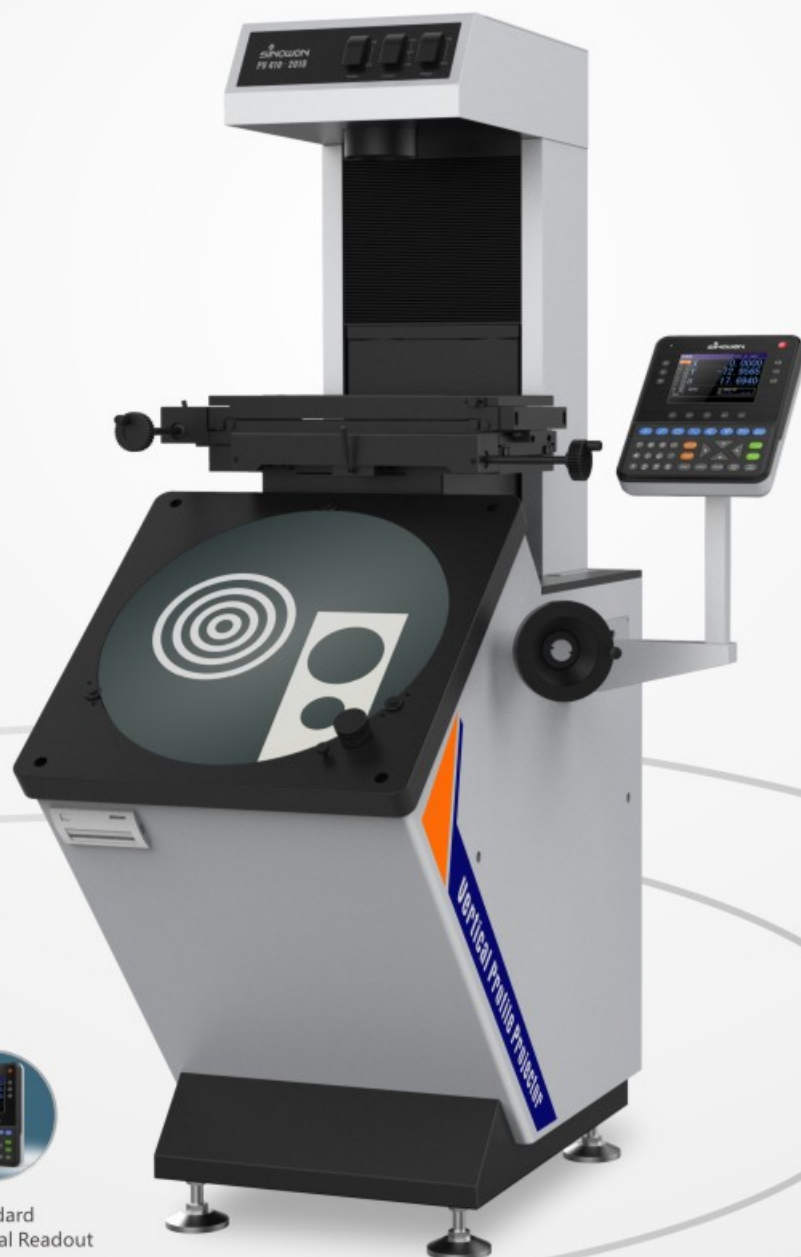
Excellent Quality



Long Using Life

Ø400mm Digital Vertical Profile Projector

PV410 Series



Ø400
Vertical Optical System



Standard
10X Objective



Standard
DP400 Digital Readout

+ Characteristic

- The lifting system adopts cross roller rail and precision screw drive, which makes lifting drive more comfortable and stable;
- Coating process reflector, clearer image and great dustproof;
- Adjustable contour and surface illumination, to meet with difference workpiece demand;
- Imported high light and long using life LED illumination ,to ensure precision measurement demand;
- High resolution optical system with clear image and magnification error is less than 0.08%;
- Powerful Bi-axial fan cooling system, highly increase using life;
- Powerful and colorful DRO Dp400, realized fast and accurate 2D Measurement;
- Built-in Mini-printer, can print and save data;
- With standard 10X objective, optional 5X,20X, 50X objective, rotary table, foot switch ,clamp, etc.

+ Specifications

Product Name	Digital Vertical Profile Projector
Model	PV410-2010
Code#	511-440
Table Size	308x408mm
Glass Table Size	198x306mm
XY Travel Range	200x100mm
Z Travel Range	100mm
Accuracy	$\leq 3 + L/200(\mu m)$
Resolution	0.001mm
Max. Workpiece Load	10Kg
Screen	Effective Diameter: $\phi 412mm \geq \phi 400mm$ Screen rotation 0~360° ; Resolution: 1' or 0.01°, accuracy: 6'
Digital Readout	DP400 (510-340) Multifunction colorful LCD digital readout
Working Environment	Temp 20°C \pm 5°C, Humidity 40%—70%RH
Power Supply	AC110V/60Hz; 220V/50Hz,150W
Illumination	Contour Illumination : 3.2V/10W LED
	Surface Illumination : 3.2V/10W LED

+ Objective Lens

Specifications				
Magnification	PV410-5X	PV410-10X	PV410-20X	VP420-50X
Field of View	$\phi 80mm$	$\phi 40mm$	$\phi 20mm$	$\phi 8mm$
Working Distance	65mm	80mm	67.7mm	51.4mm



High Accuracy



Excellent Quality



Long Using Life

Ø350mm Digital Horizontal Profile Projector
PH350-2010



Ø350
Horizontal Optical System



Standard
10X Objective



Standard
DP400 Digital Readout

+ Characteristic

- The lifting system adopts linear guide rail and precision screw drive, which makes lifting drive more comfortable and stable;
- Coating process reflector, clearer image and great dustproof;
- Adjustable contour and surface illumination, to meet with difference workpiece demand;
- Imported high light and long using life LED illumination ,to ensure precision measurement demand;
- High resolution optical system with clear image and magnification error is less than 0.08%;
- Powerful Bi-axial fan cooling system, highly increase using life;
- Powerful and colorful DRO Dp400, realized fast and accurate 2D Measurement;
- Built-in Mini-printer, can print and save data;
- With standard 10X objective, optional,20X, 50X objective, rotary table, foot switch ,clamp, etc.

+ Specifications

Product Name	Digital Horizontal Profile Projector
Model	PH350-2010
Code#	512-350
Working Stage Size	355x126mm
Working Stage Travel	200x100mm
Focusing	90mm
Accuracy	$\leq 4+L/200(\mu m)$
Resolution	0.0005mm
Load Capacity	15Kg
Screen	$\phi 380\text{mm}$, Effective range $\geq \phi 350\text{mm}$ Rotation Angle 0~360° ;Resolution: 1 or 0.01°,Accuracy 6'
Digital Readout	DP400 (510-340) Multifunction colorful LCD digital readout
Illumination	Contour Illumination : 3.2V/10W LED Surface Illumination : 220V/130W LED
Working Environment	Temp 20°C \pm 5°C, Humidity 40% — 70%RH
Power Supply	AC110V/60Hz; 220V/50Hz,200W

+ Objective Lens

Specifications			
Magnification	PH350-10X	PH350-20X	PH350-50X
Field of View	$\phi 30\text{mm}$	$\phi 15\text{mm}$	$\phi 6\text{mm}$
Working Distance	75mm	69mm	44mm



High Accuracy



Excellent Quality



Long Using Life

Ø400mm Digital Horizontal Profile Projector
PH400-3015



Ø400
Horizontal Optical System



Standard
5X Objective



Standard
DP400 Digital Readout

+ Characteristic

- The lifting system adopts cross roller rail and precision screw drive, which makes lifting drive more comfortable and stable;
- Coating process reflector, clearer image and great dustproof;
- Adjustable contour and surface illumination, to meet with difference workpiece demand;
- Imported high light and long using life LED illumination, to ensure precision measurement demand;
- High resolution optical system with clear image and magnification error is less than 0.08%;
- Powerful Bi-axial fan cooling system, highly increase using life;
- Powerful and colorful DRO DP400, realized fast and accurate 2D Measurement;
- Built-in Mini-printer, can print and save data;
- With standard 10X objective, optional 5X, 20X, 50X objective, rotary table, foot switch, clamp, etc.



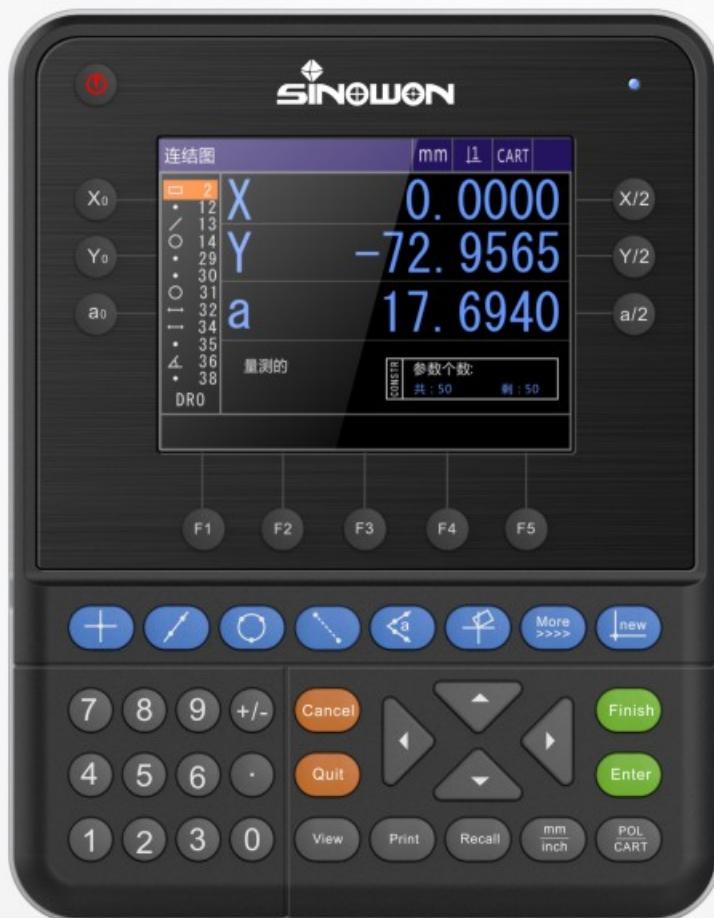
+ Specifications

Product Name	Digital Horizontal Profile Projector
Model	PH400-3015
Code#	512-400
Working Stage Size	455x126mm
Working Stage Travel	300x150mm
Focusing	120mm
Accuracy	$\leq 3 + L/200(\mu m)$
Resolution	0.0005mm
Load Capacity	15Kg
Screen	Dia: $\phi 412mm$, Measurement Range $\geq \phi 400$ Rotation Angle 0~360°; Resolution: 1 or 0.01°, Accuracy 6'
Digital Readout	DP400 (510-340) Multifunction colorful LCD digital readout
Illumination	Contour Illumination : 3.2V/10W LED Surface Illumination : 3.2V/10W LED
Working Environment	Temp 20°C \pm 5°C, Humidity 40% – 70%RH
Power Supply	AC110V/60Hz; 220V/50Hz, 200W
Product Dimension	1099 x 1455 x 633mm
Packing Dimension	1157 x 1355 x 653mm
Gross/Net Weight	350/300kg

+ Objective Lens

Specifications					
Magnification	5X	10X	20X	50X	100X
Field of View	$\phi 80mm$	$\phi 30mm$	$\phi 15mm$	$\phi 6mm$	$\phi 3mm$
Working Distance	75mm	75mm	69mm	44mm	26mm

Color Screen Multifunction Digital Readout

DP400

Weak Current



Silicon Button



Multi-language



Color LCD

+ Characteristic

- 5.6" Color Screen and Sealed silicone touch button, with full information, friendly operation, long using life;
- Save 100 permanent image elements, can set and save current date;
- Multi-function Measurement: Point, line, circle, angle, distance, rectangular, screw thread, ellipse, slot, rounding, preset, construction, and so on;
- Obverse or Opposite direction counting function, 1/2 value, midpoint, permission function, Call function, REC(record) function, and Cycle measurement;
- Section and linear compensation are available for 3-axis, highly ensure measurement accuracy;
- Can connect foot switch, printer, optical edge detection and other multiple auxiliary measurement tools;
- With polar and coordinate system, and can display millimeter and inch, and can shift easily;
- With independent password permission function, to prevent the possibility of data deviation by wrong operation, it can also change the original setting by password permission;
- Support multiple language: Chinese, English and other language.

+ Specifications

Model	DP400
Code#	510-340
Language	Simple Chinese, Complicated Chinese, Portuguese, German and English, etc.
LCD Screen Size	115mm×85mm
LCD Screen Resolution	640*480
Digital Display Range	8 Digits (With Decimal Point)
Display Axis	3-axis (X, Y, Z/Q)
Z/Q Display Model	Length or Angle
Angle Display Model	Degree, Minutes and Second or Degree
Linear Scale Signal	TTL square-wave or AC sine wave of two 90° phase angle difference, drive capacity larger than 10MA
Linear Scale Resolution	0.1um, 0.2um, 0.5um, 1um, 2um, 5um
Baud Rate	4800, 9600, 14400, 19200, 38400, 57600
Data Output Port	RS232, DB-9 Parent interface
Operation Keyboard	Sealed Silicone touch-type keyboard
Expansion port	Foot Switch, Printer, Optical Edge Finder, etc
Input Power Supply	DC12V/3A
Operation Environment	Working Temperature: 0℃~40℃; Storage Temperature: -10℃~60℃; Relative Humidity: <90%RH

+ Operation Interface

